

TO LEARN MORE ABOUT HOW YOU CAN
GIVE, ADVOCATE AND VOLUNTEER,
OR TO DISCUSS
PLANNED GIVING OPTIONS,
PLEASE CONTACT US.



MONMOUTH COUNTY
1415 Wyckoff Road
Farmingdale, NJ 07727

OCEAN COUNTY
253 Chestnut Street
Toms River, NJ 08753

PH. 732.938.5988
uwmoc.org

FOLLOW US ON SOCIAL MEDIA @UWMOC



VOLUNTEER CENTER

United Way of Monmouth and Ocean Counties (UWMOC) makes it easy to give your time and talent – or to connect to volunteers needed for your nonprofit organization's efforts – through our Volunteer Center. Sponsored by the FirstEnergy Foundation, Monmouth County Board of Chosen Freeholders and New Jersey Natural Gas, the Volunteer Center connects prospective individuals with local nonprofits that need assistance.

Organizations can contact us to coordinate a Day of Caring with a local agency for employees to work alongside their teammates to make a difference in our community.

To register and browse opportunities, visit uwmoc.org/volunteer or call 732-938-5988.



Our Warmest Wishes drive was established as a result of our community's identification of children's warm winter outerwear as a significant need. With the help of donations from individuals and local organizations, children receive brand-new coats, hats, gloves and more to keep them warm on the way to and from school. Collections for this drive occur from October - December.



FOR MORE INFORMATION ON DONATING
OR VOLUNTEERING, PLEASE CONTACT US.

GRUNIN FOUNDATION CHALLENGE



You are invited to participate in the Jay and Linda Grunin Foundation Challenge to help raise up to \$1 million! In order to support UWMOC's mission to improve the lives of youth and their families, the Grunin Foundation will match all new or increased donations dollar for dollar up to \$1 million by 2021.

Please consider a new or increased gift to help us reach the goal of \$1 million raised to affect long-lasting, life-changing work for the youth and their families of Monmouth and Ocean counties. We also ask that you help spread the word of the generous challenge match and get others to join the fight for a stronger community with United Way. To donate, visit uwmoc.org/give.

Thank you to the Jay and Linda Grunin Foundation, which uses philanthropy to increase citizen activity and economic development opportunities through the arts, healthcare and education.

LEADERSHIP GIVING



Members of the Tocqueville Society (gifts of \$10,000 or more) and the Leadership Giving Society (gifts of \$1,000-\$9,999) inspire others to join them in strengthening our communities and provide hope and opportunities to individuals in need. Members are made up of community and business leaders who are passionate about changing lives, committed to creating action and dedicated to bringing together the expertise and resources that produce results.

Women United is a leadership group (gifts of \$1,000 or more) inspired to make a real difference in the lives of children and their families. They ignite the power of women to advance UWMOC's work in early grade reading. To learn more about being a part of Women United, visit uwmoc.org/WomenUnited.



IMPROVING THE LIVES OF YOUTH AND THEIR FAMILIES



GIVE. ADVOCATE. VOLUNTEER.
LIVE UNITED

OUR MISSION

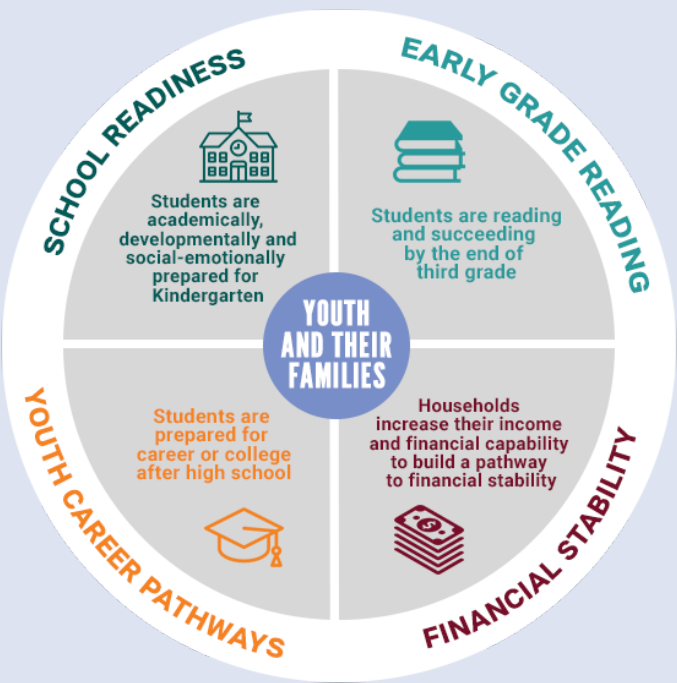
United Way of Monmouth and Ocean Counties mobilizes donors, volunteers and community partners to improve the lives of youth and their families.

OUR VISION

Every child is successful, every family is financially stable, and every community we serve is stronger.



COMMUNITY IMPACT AGENDA



Why are we working in these areas?


- Children from low-income homes hear as many as 30 million fewer words than their more affluent peers by age 5.
- Reading proficiency by 3rd grade is the most important predictor of high school graduation and career success.
- Grades and behavior in the middle grades can help predict whether a student will persist to earn a high school diploma or drop out of school.
- 38.5% of New Jersey households can't afford the basic needs of housing, food, child care, health care, transportation, etc.

2018 Community Impact Highlights



SCHOOL READINESS

247 PARENTS ENGAGED IN ACTIVITIES TO PREPARE THEIR CHILDREN FOR KINDERGARTEN



EARLY GRADE READING

92% OF STUDENTS IN K-3 MAINTAINED OR IMPROVED THEIR READING LEVELS IN SUMMER LITERACY PROGRAMS



YOUTH CAREER PATHWAYS


166 HIGH SCHOOL STUDENTS DEVELOPED JOB SKILLS WITH **81%** OF PARTICIPATING STUDENTS IN GRADES 11-12 GAINING EMPLOYMENT



FINANCIAL STABILITY

835 PEOPLE ON THE PATHWAY TO FINANCIAL STABILITY, RESULTING IN **\$842,937** IN ECONOMIC BENEFITS

FINANCIAL SUCCESS CENTERS



FINANCIAL SUCCESS CENTER

Our Financial Success Centers (FSCs) provide comprehensive resources under one roof to help you move from financial difficulty to economic well-being. They are designed to assist any Monmouth and Ocean County resident who wishes to move forward financially or create more economic balance in their lives. Our tools help you work towards your financial goals, and services are customized to meet your individual needs.

At all FSC locations, you can meet one-on-one with a trained Financial Coach who will work with you to develop a personalized action plan to meet your financial goals in three key areas:

- increasing income,
- money management, and
- sustaining and building your savings & assets


Financial Success Centers are currently located in Bayville, Eatontown, Freehold, Keansburg, Long Beach Island, Manahawkin, Neptune, Red Bank, South Toms River and Toms River. Walk-ins at most locations are welcome, but appointments are preferred.

For a full list of services, locations and more information, visit uwfinancialsuccess.org.

For upcoming news and events,



NJ 2-1-1



Need help? 211

Monmouth and Ocean County residents can access our 24/7 help line to connect with essential local and governmental services including day care facilities, shelters, affordable housing units, social services, employment training programs, senior services, medical insurance and more.

For more details or assistance, visit nj211.org or dial **2-1-1**.